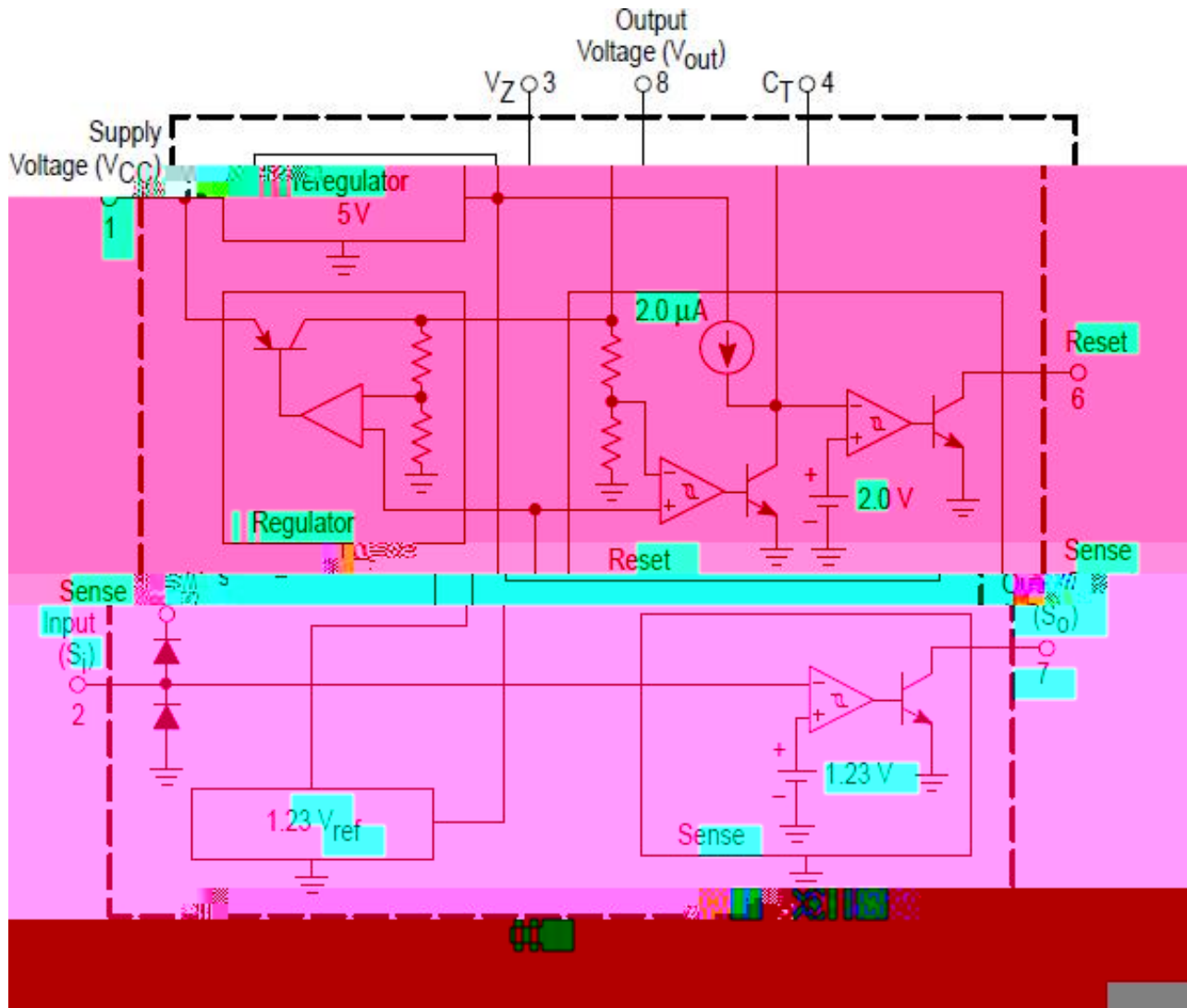


3-1 MC 4949L5/MC 4949L50

1		
2		
3		
4	C	
5	G D	
6		
7		
8		
E		G D



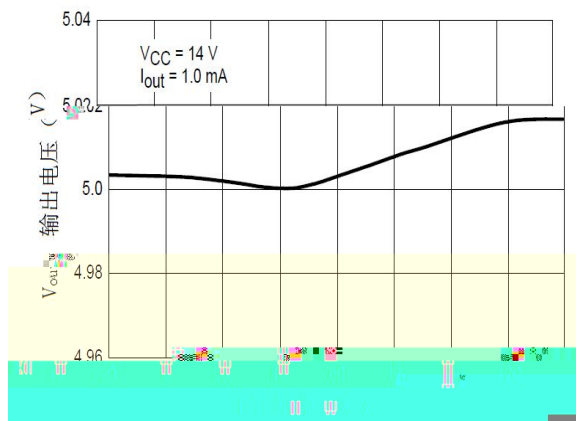
3-2 MC 4949L5/MC 4949L50

	cc	5.5	-	42		
	I			330	A	
		4.95	5	5.05		
	I <sub>1</sub>	-	1	-	A	
	i		cc			
			5			
	I		5		A	
		-40	-	150		
		-40	-	150		

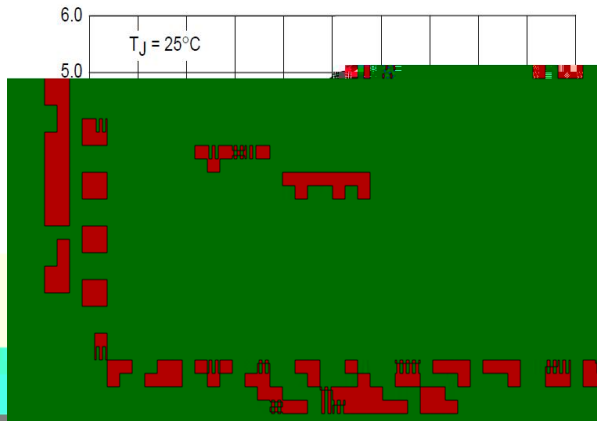
	JA	100	120	200	K/	MC 4949L5
	JA	50	75	90	K/	MC 4949L50

	4.95	5.0	5.05		$I = 1.0 \text{ A}$
	4.9	5.0	5.1		$6.0 < CC < 28$
	4.9	5.0	5.1		$1.0 \text{ A} < I < 50 \text{ A}$
					$CC = 35 < 1.0$
I	100	-	330	A	$1.0 \text{ A} < I < 50 \text{ A}$
	-	0.1	0.25		$I = 10 \text{ A}$
	-	0.2	0.40		$I = 50 \text{ A}$
	-	0.3	0.50		$I = 100 \text{ A}$
	-	1.0	20		$6.0 < CC < 28$
	-	8.0	30		$I = 1.0 \text{ A}$
	-				$1.0 \text{ A} < I < 100 \text{ A}$
I <sub>L</sub>	105	-	330	A	$= 4.5$
	-	100	-	A	$= 0$
I <sub>E</sub>	-	80	100	A	$I = 0.3 \text{ A}$
					$J < 100$
I					

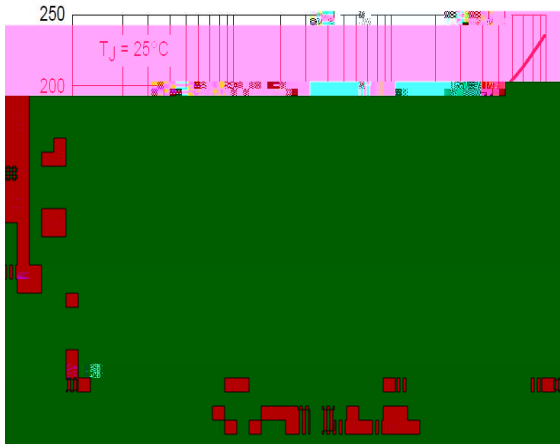
	C	-	100	-		
	I	-	-	5	A	
		1.16	1.23	1.35		I=1.5 1.0
		20	100	200		
	L	-	-	0.4		I 1.16 CC 3.0 =10
	I <sub>H</sub>	-	-	1.0	A	=5.0 I 1.5
	I <sub>I</sub>	-1.0	0.1	1.0	A	
		-	5.0	-		I =10 A



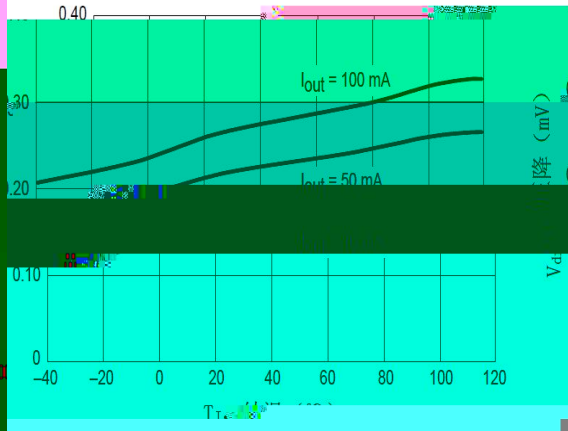
5-1



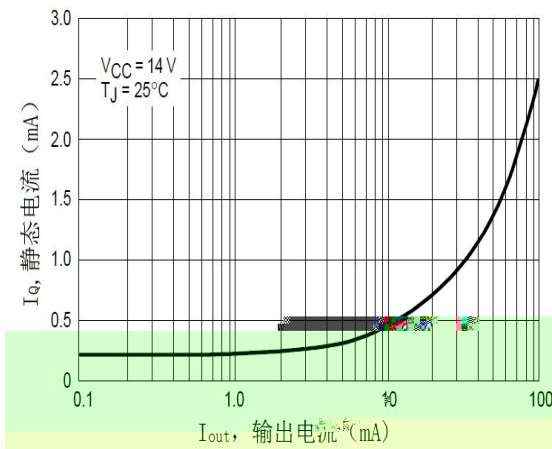
5-2



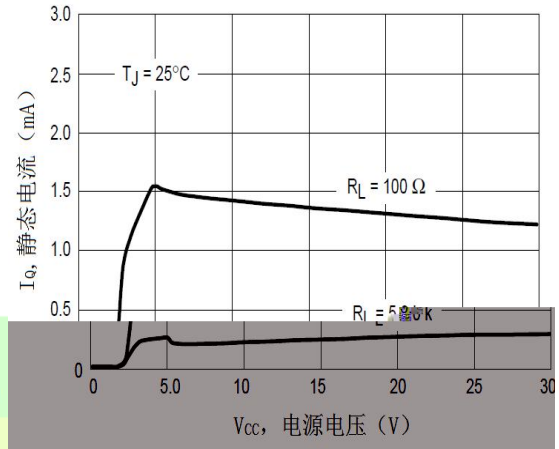
5-3



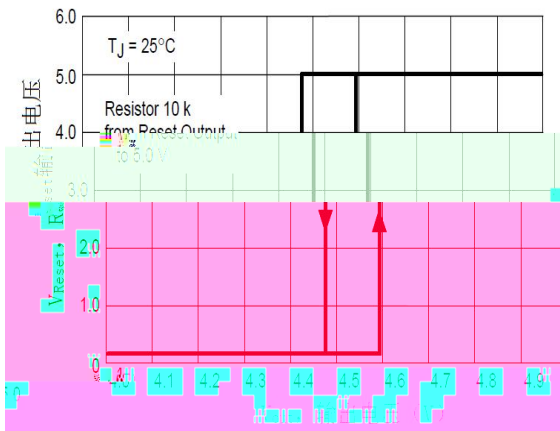
5-4



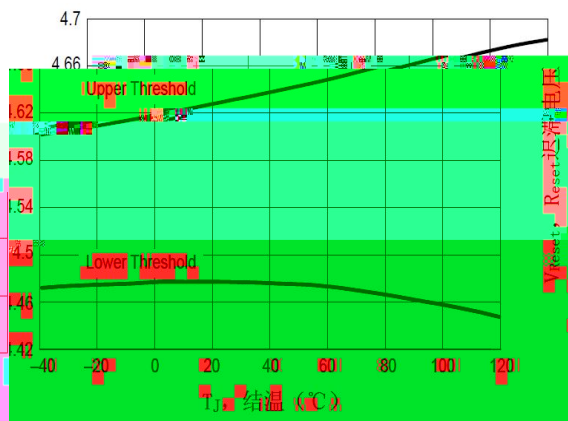
5-5



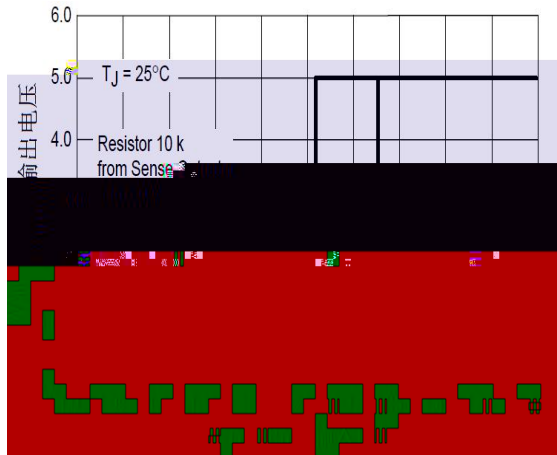
5-6



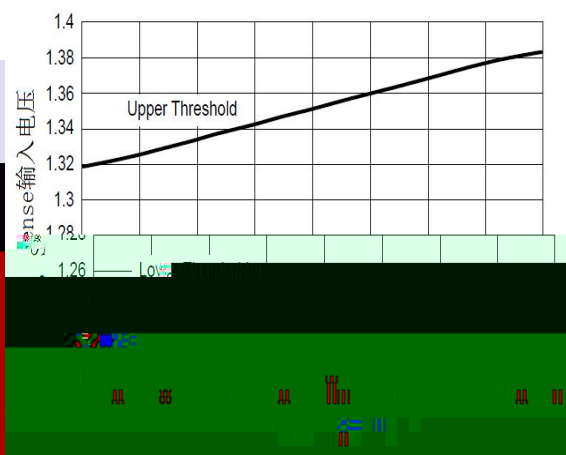
5-7



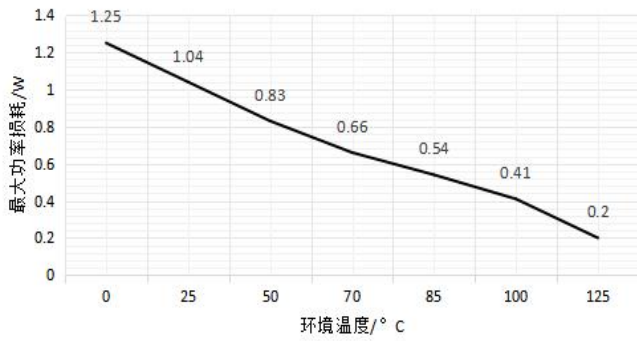
5-8



5-9



5-10



5-11

8.0

100 /

8.0

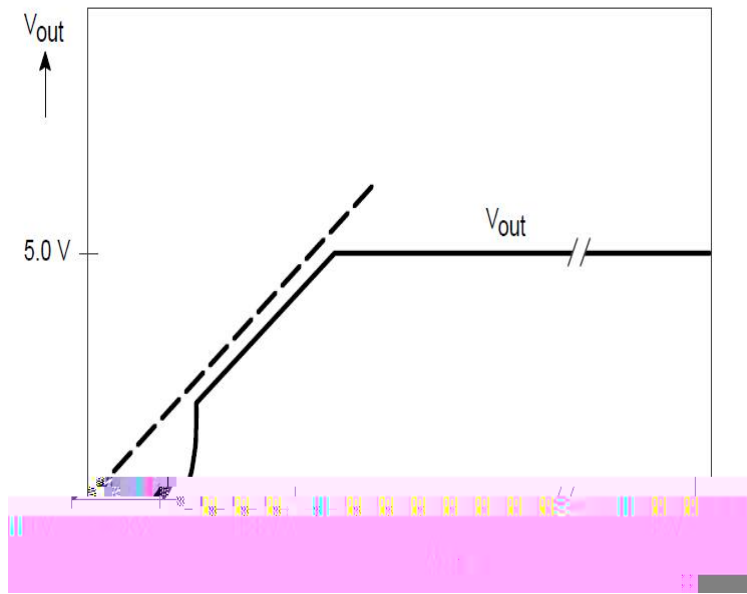
0.4 /

8.0

3

C3 1.0 F





6-2

MC 4949

100 A

MC 4949

80 A

MC 4949

330 A

MC 4949

5

3

100 A

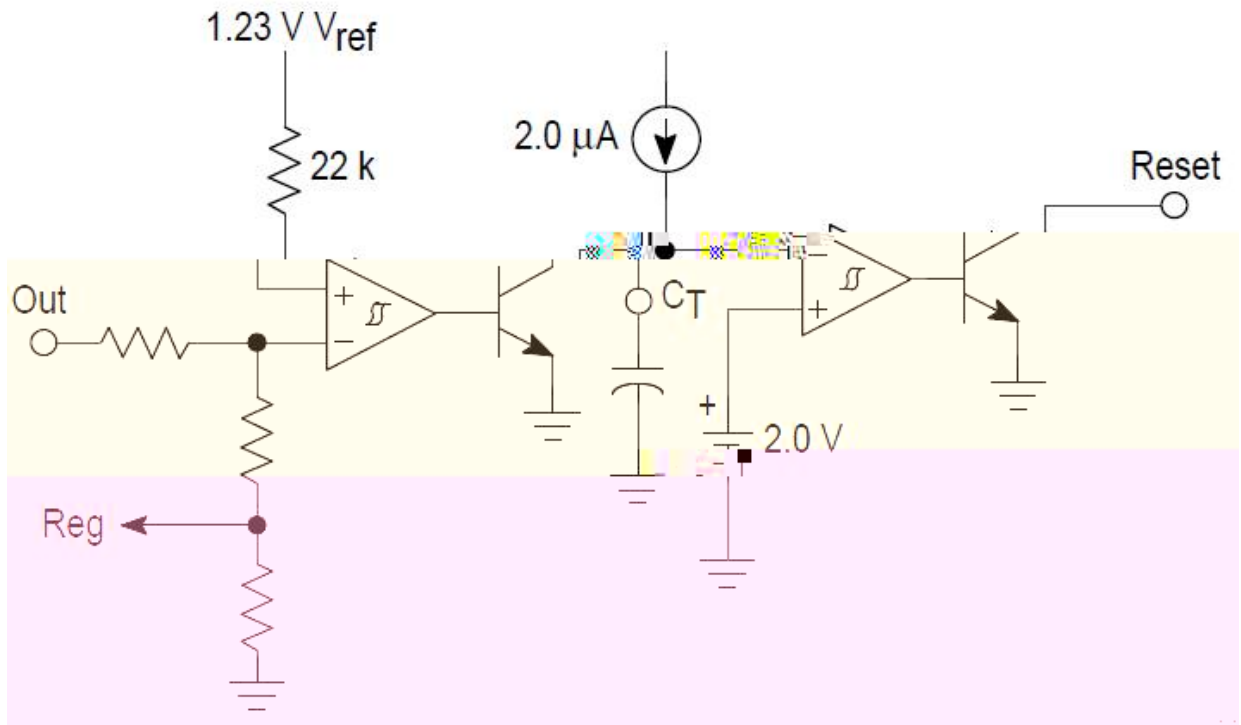
8

3

100 F 1.0 F

3

6-3



6-3

4.3

D

4

C

6.1

$$r_{D} = \frac{C \times 2.0}{2.0 A}$$

6.1

6.1

C

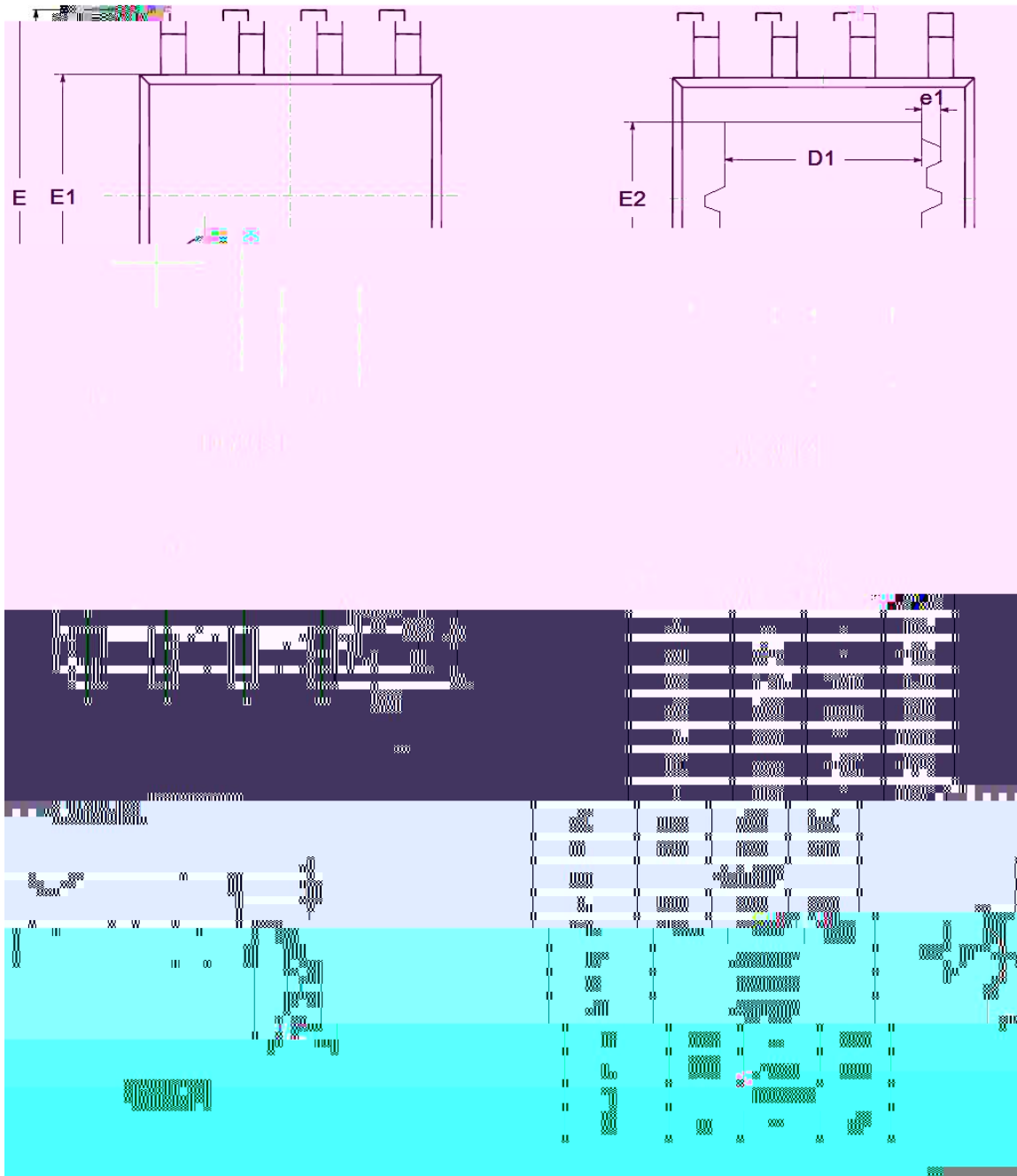
C

50 ,

6-4







MC 4949L5	8	MC 4949L5	4000 / &
MC 4949L50	E 8	MC 4949L50	4000 / &